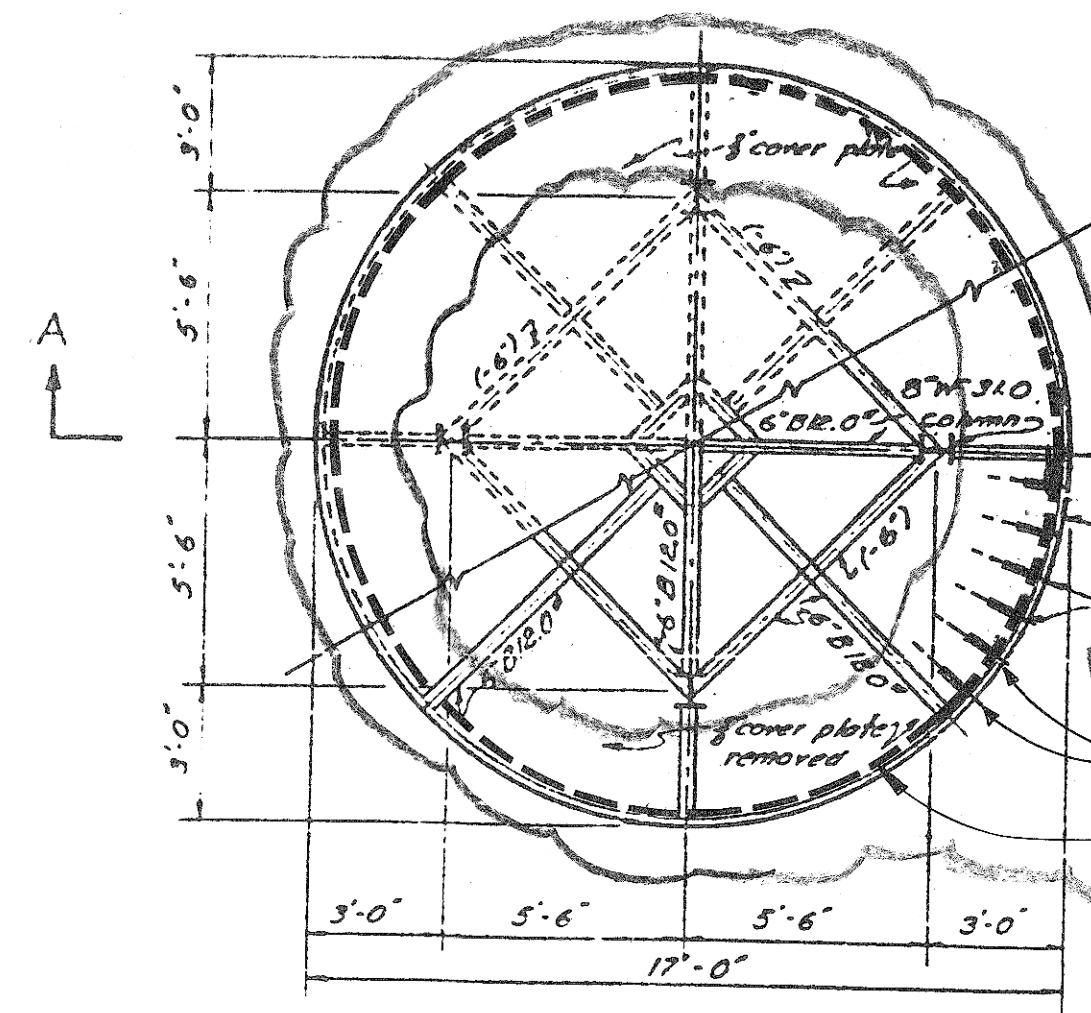
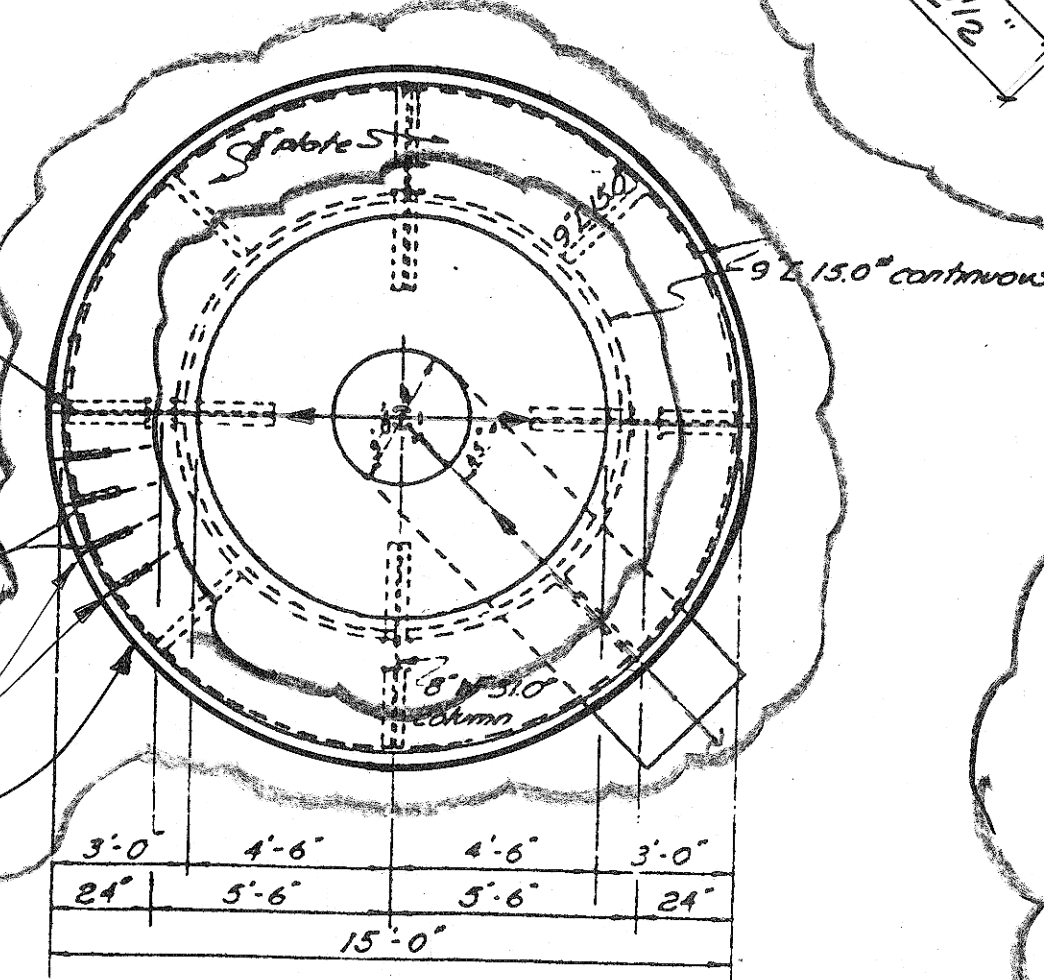


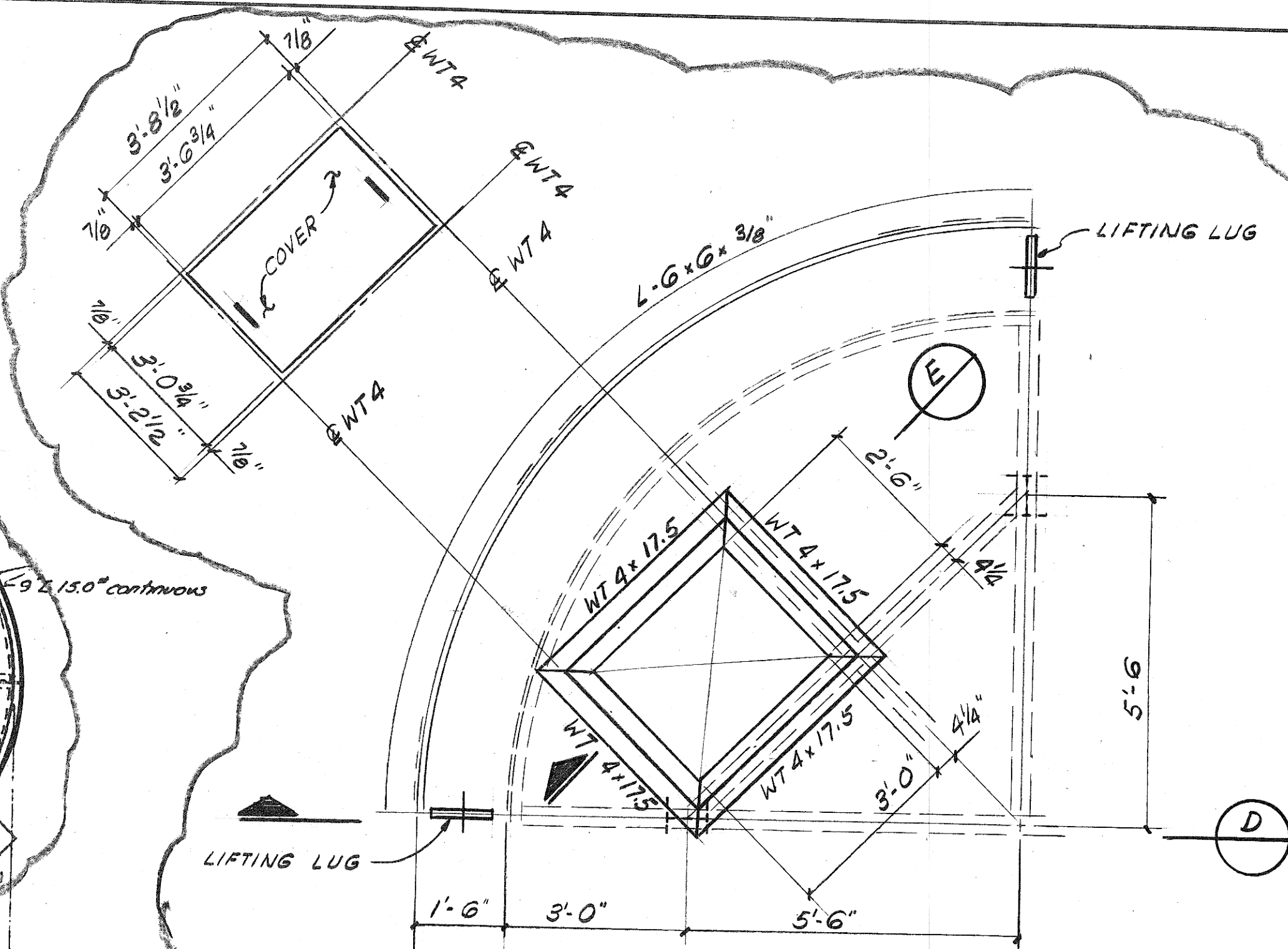
REV	DESCRIPTION	BY	DATE	CHK'D
△	ISSUED FOR BIDS	ALH	SEPT. 94	BWL
△				
△				
△				



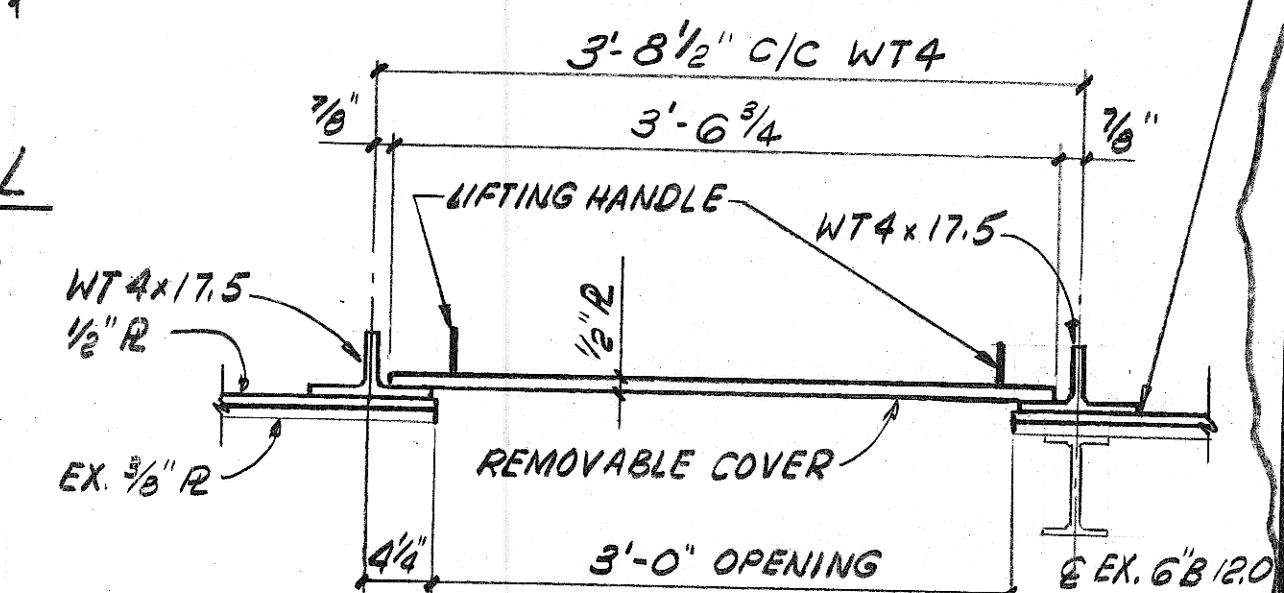
TOP PLAN



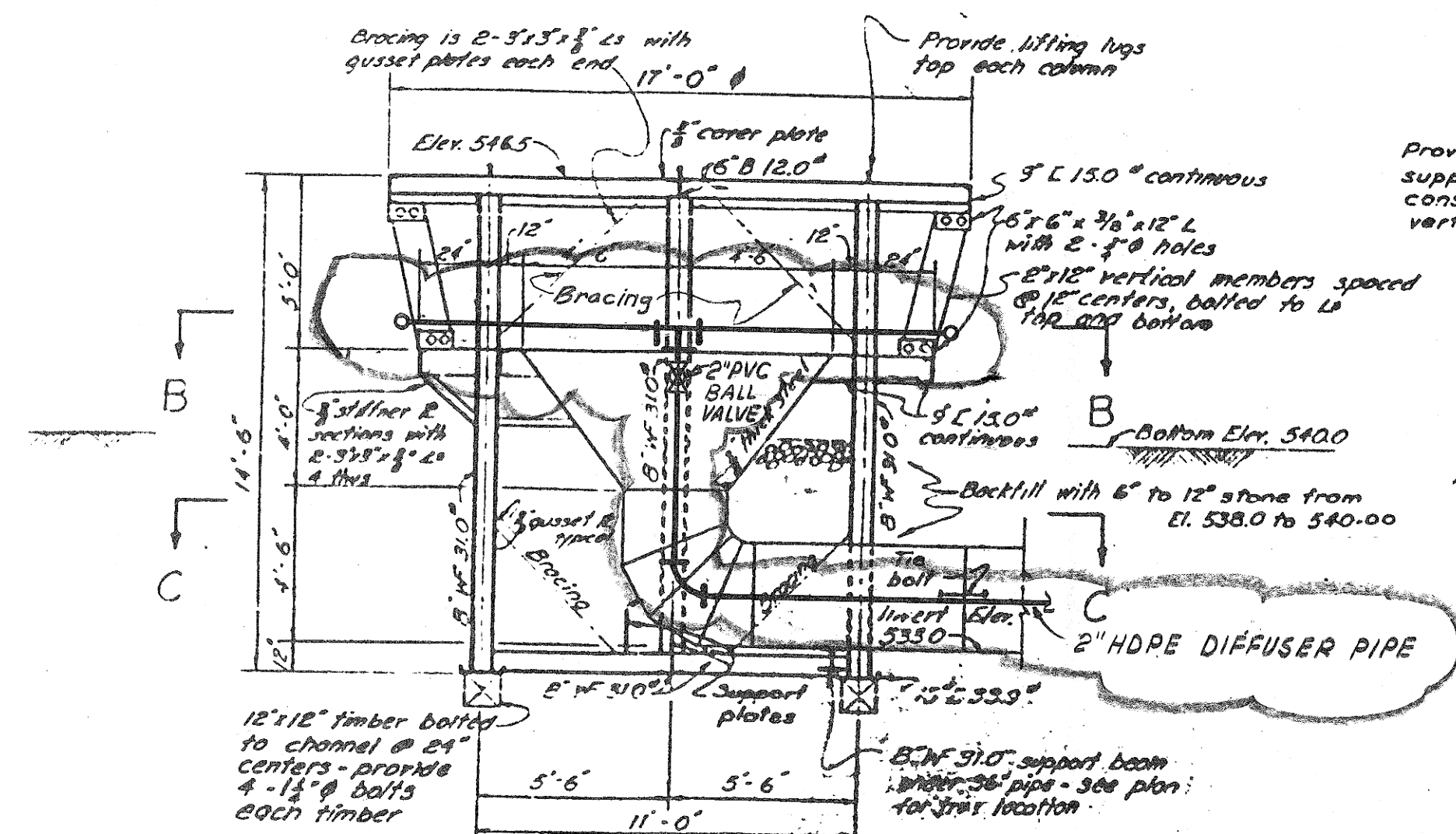
SECTIONAL PLAN B-B



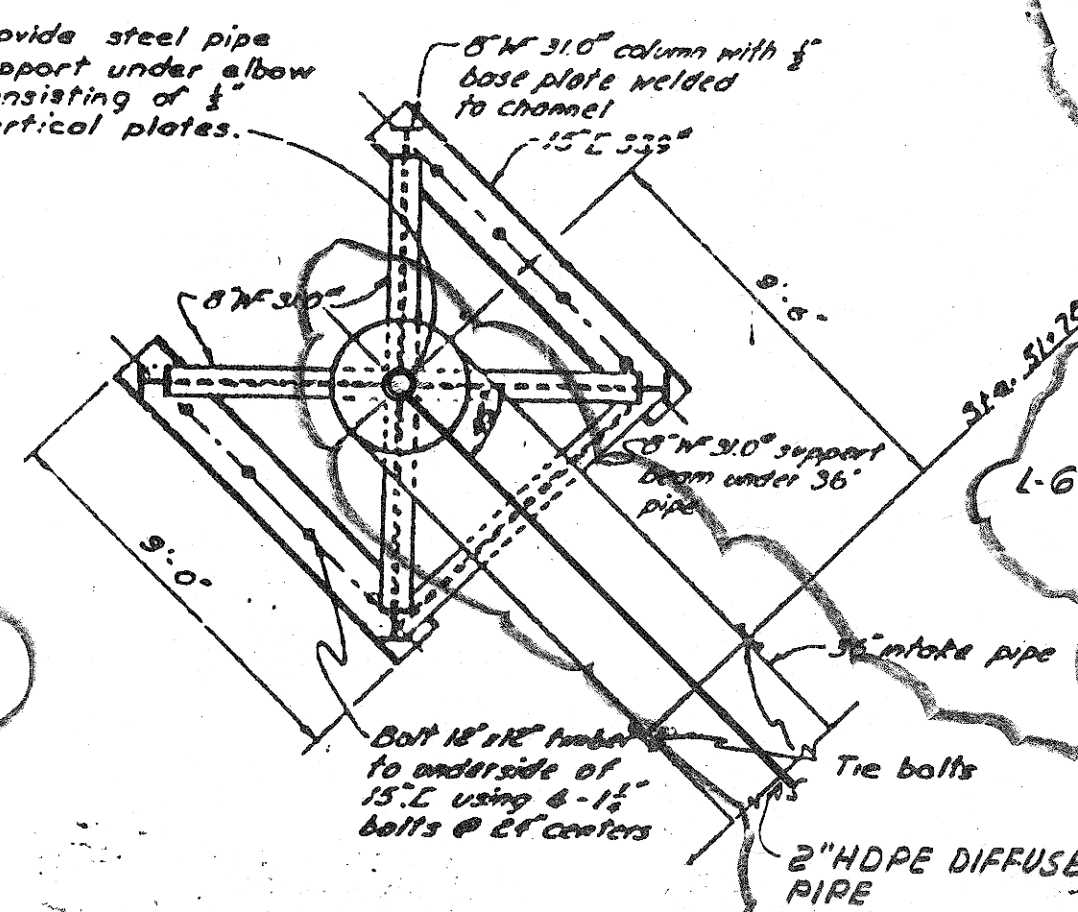
PARTIAL PLAN SYMMETRICAL
EXCEPT FOR COVER (ONE PLACE ONLY)
1/8" = 1'-0"



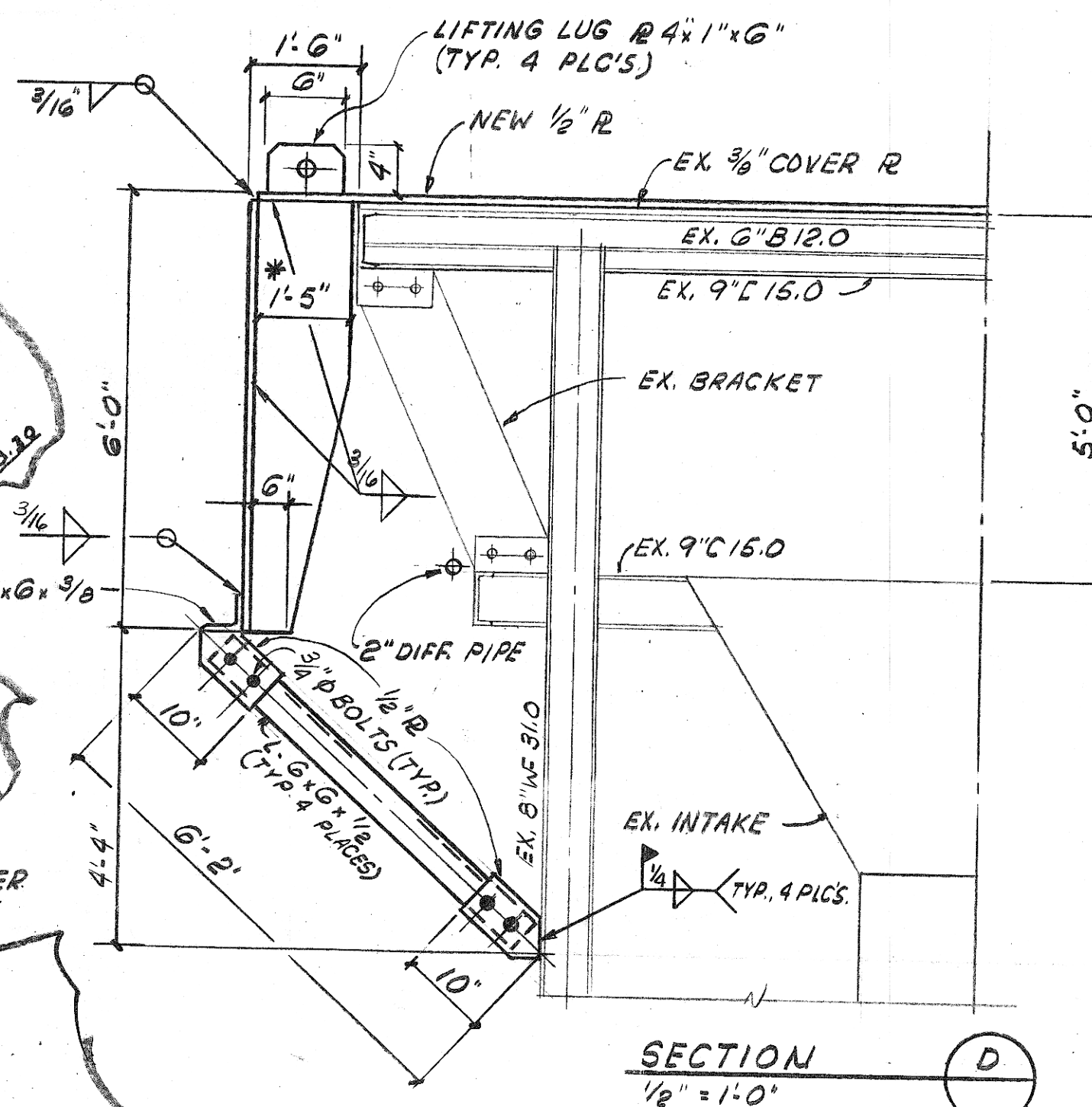
SECTION E
1" = 1'-0"



SECTION A-A



SECTIONAL PLAN C-C



SECTION D
1/8" = 1'-0"

- Note: 1. Backfill entirely around 90° bend with dry mix conc. to El. 538.0.
2. Stone backfill to be placed over area 24' in dia. centered on crib opening.
3. Contractor shall provide suitable protection over crib openings during installation to prevent entry of sand, stone, etc.

INTAKE CRIB WITH
SINGLE STEEL INTAKE
Scale: 1/8" = 1'-0"

THIS DRAWING WAS ORIGINALLY ISSUED IN 1964 BY MCNAMEE, PORTER & SEELEY, CONTRACT 1, SHEET 2 OF 2. IT HAS BEEN MODIFIED FOR THIS CONTRACT TO SHOW NEW WORK.

ENCIRCLED AREA DENOTES NEW WORK

* FIELD VERIFY CLEARANCE PRIOR TO FABRICATION & INSTALLATION

Ann Arbor, Michigan Detroit, Michigan Escanaba, Michigan Grand Rapids, Michigan Lansing, Michigan		MCM McNAMEE ENGINEERING EXCELLENCE SINCE 1914	
DESIGNED S. MAGNAN		CHECKED E. LYONS	
SCALE AS NOTED		CADD DATE 09-26-94	
PART		CITY OF TRAVERSE CITY, MICHIGAN RAW WATER INTAKE SYSTEM IMPROVEMENTS ZEBRA MUSSEL CONTROL SYSTEM	
DIVISION		CONTRACT	
225.14-W-1		SHEET 3 OF 3	